



23001 Industrial Blvd, Rogers, MN 55374 / 1-866-527-7637  
[www.motoalliance.com](http://www.motoalliance.com)

## VIPER Winch Mount

MA11940

## Polaris RZR Turbo S Winch Mount

Thank you for purchasing our VIPER winch mount. You now own a premium custom winch mount which allows you to use your winch with your UTV / SxS. Please note the following instructions and heed all warnings.

- Please use common sense when operating your UTV / SxS
- Read your Winch Operators Manual and all other operator manuals, including warning labels, before operating your UTV / SxS
- Be observant of moving parts causing entanglement, use extreme caution!

**SEVERE INJURY OR DEATH MAY RESULT IF YOU ARE NEGLIGENT.**

MA11940

VIPER Polaris RZR Turbo S Winch Mount



**motoalliance**

23001 Industrial Blvd

Rogers, MN 55374

866.527.7637

Please verify that all hardware and parts are included in your package.

**Kit Contents:**

Item	Description	QTY
1	MA11940-1 Main Mount Plate	1
2	MA11940-W1 Strap	1
3	3/8"-16 x 3/4" Hex Head Bolt	2
4	3/8"-16 Nylock Nut	1
5	3/8" Flat Washer	1

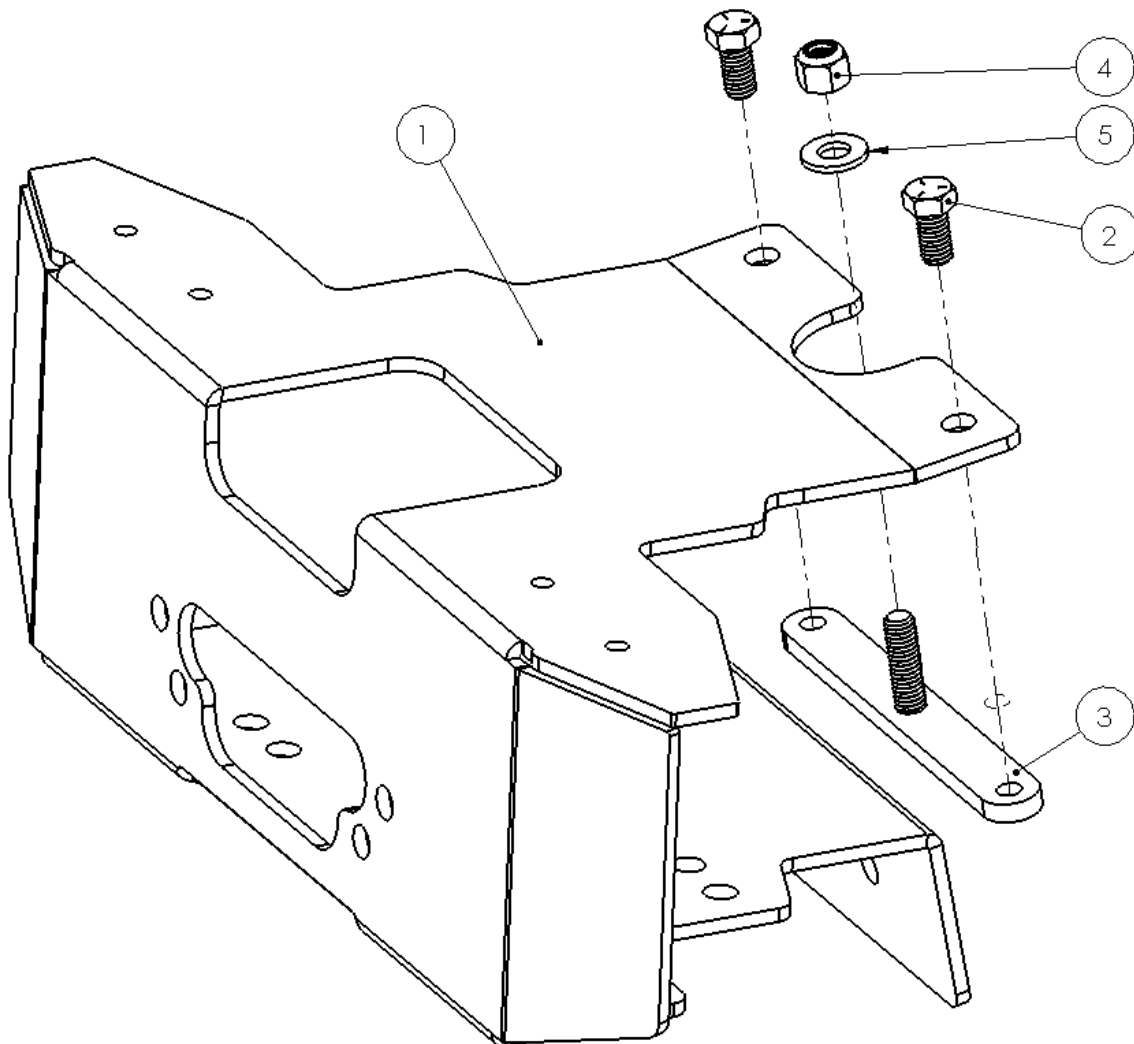


Figure 1

MA11940

VIPER Polaris RZR Turbo S Winch Mount



**motoalliance**

23001 Industrial Blvd

Rogers, MN 55374

866.527.7637

1. Remove the two screws that secure the plastic winch cover plate on the front of the machine as shown in Figure 2.

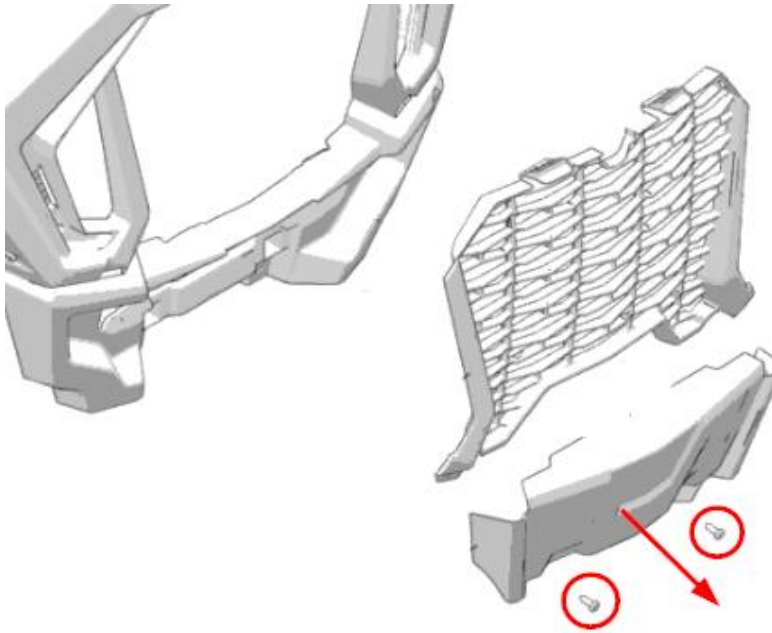


Figure 2

2. Remove the two bolts securing the tow hook as shown in Figure 3.

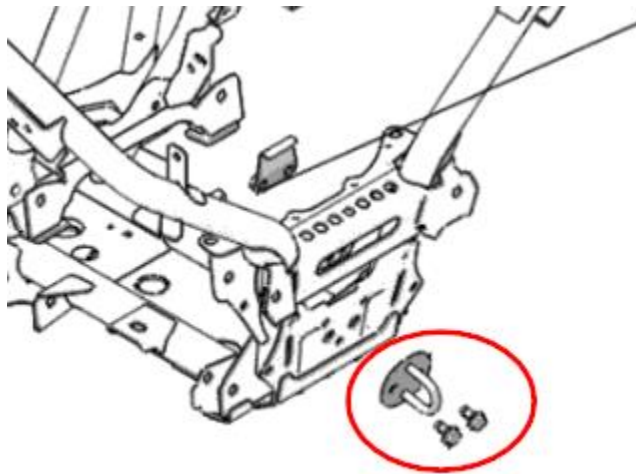


Figure 3

MA11940

VIPER Polaris RZR Turbo S Winch Mount



**motoalliance**

23001 Industrial Blvd

Rogers, MN 55374

866.527.7637

3. Remove plastic radiator grill as shown in Figure 4.

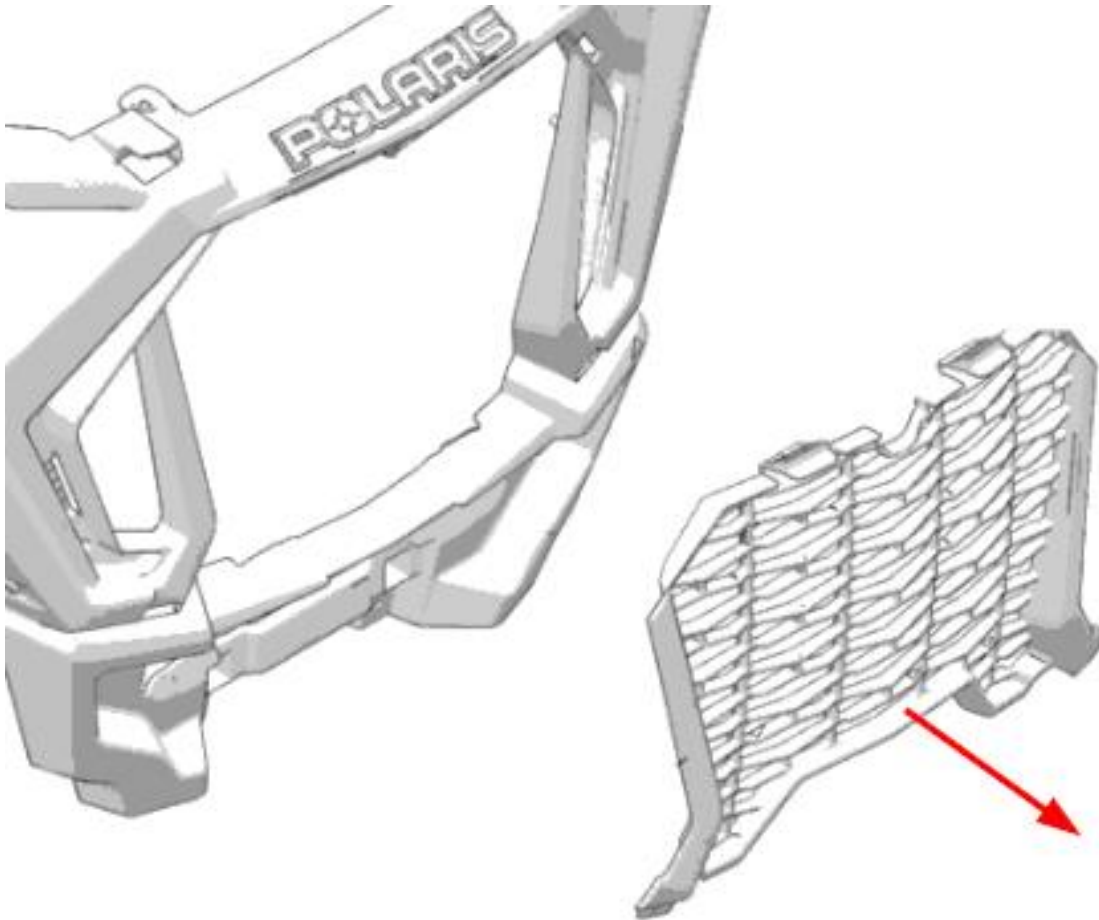


Figure 4

MA11940

**VIPER Polaris RZR Turbo S Winch Mount**



**motoalliance**

23001 Industrial Blvd

Rogers, MN 55374

866.527.7637

4. Install the Strap bracket to the frame of the RZR using the 3/8" Nylock Nut and Washer as shown in Figure 5. Note: Align the threaded holes with the two outside holes in the frame as shown.

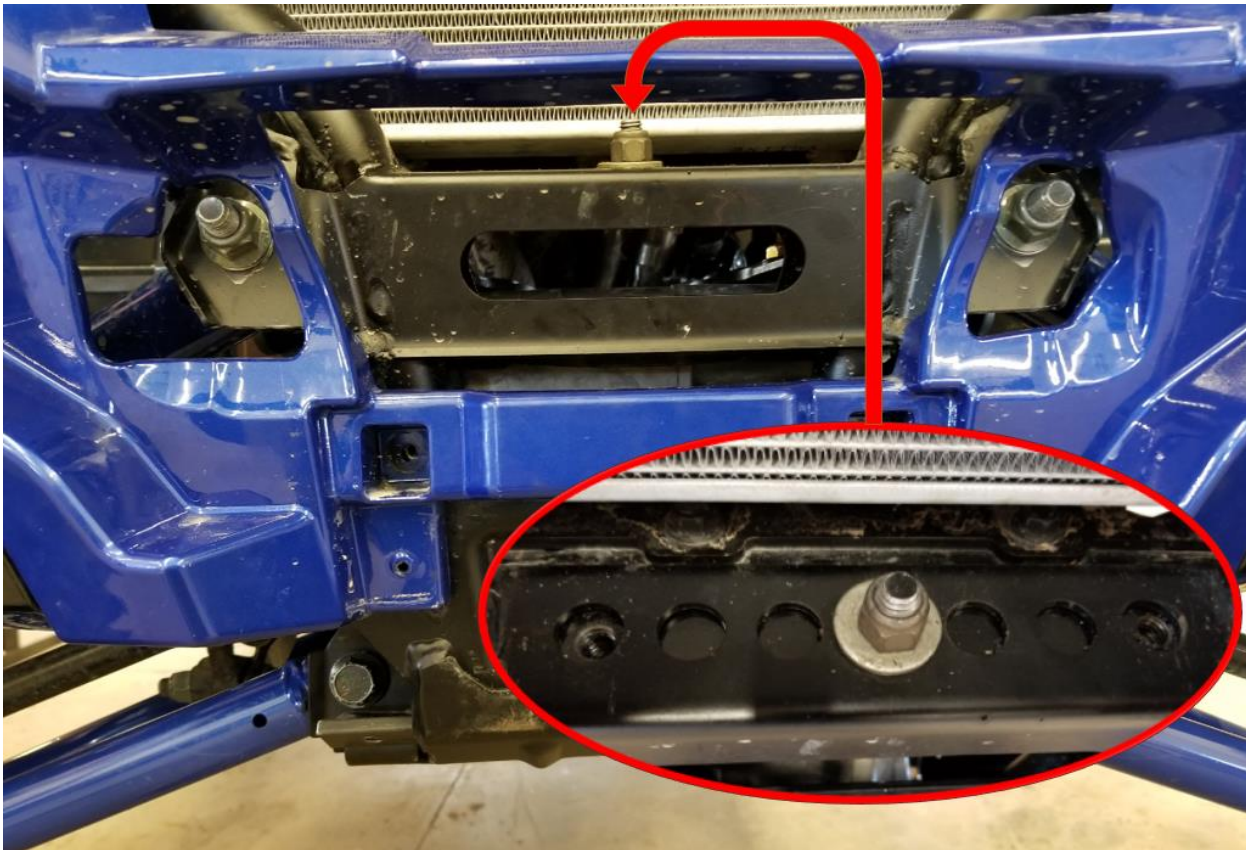


Figure 5

5. Mount the winch to the main mounting plate using the included hardware in the winch kit. Orient the winch with the motor on the passenger side of the mount plate.

MA11940

VIPER Polaris RZR Turbo S Winch Mount



**motoalliance**

23001 Industrial Blvd

Rogers, MN 55374

866.527.7637

6. Install the winch and mount plate assembly to the frame of the RZR using the two bolts removed from the tow hook and the two 3/8"-16 x 0.75" Hex Bolts. Install the 3/8" x 0.75" Hex Bolts into the threaded portion of the Strap bracket. See Figure 6 and Figure 7.



Figure 6



Figure 7

MA11940

**VIPER Polaris RZR Turbo S Winch Mount**



**motoalliance**  
23001 Industrial Blvd  
Rogers, MN 55374  
866.527.7637

7. Install the included winch fairlead using the hardware found in the winch kit.
8. Reinstall the factory radiator grill.
9. Viper winches included a pair of long power cables (Blue/Yellow) and a pair of short power cables (Red/Black). In this case, route the long cables from the battery, located under the driver seat (2-seater) or driver side rear seat (4-seater) to the front of the vehicle avoiding and sharp, hot or moving components.  
Note: Do not connect power the Blue/Yellow cables to the battery or contactor yet.
10. Mount the contactor and optional wireless remote as shown in Figure 8.

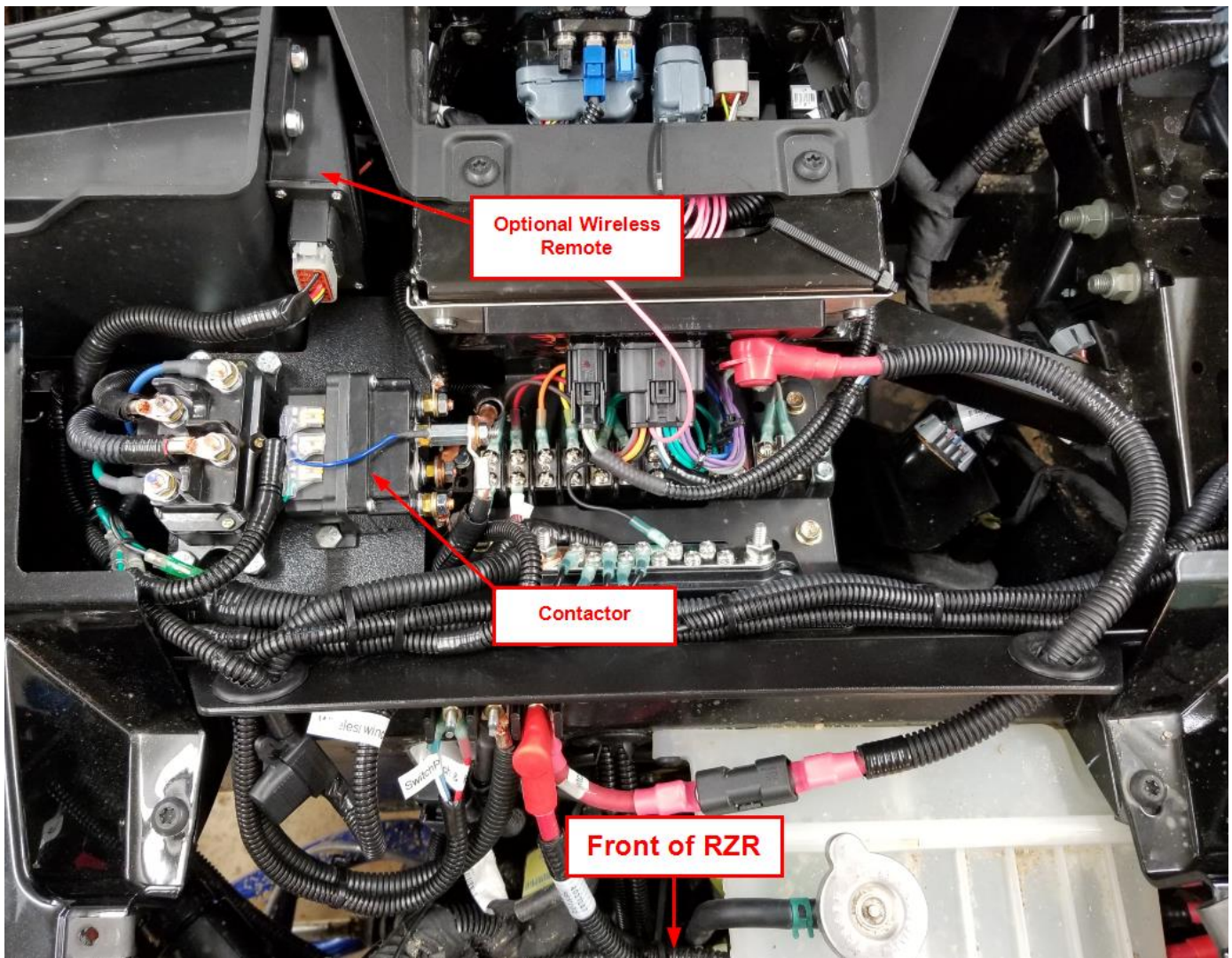


Figure 8

**MA11940**

**VIPER Polaris RZR Turbo S Winch Mount**



**motoalliance**

23001 Industrial Blvd

Rogers, MN 55374

866.527.7637

- 
11. Connect the Red/Black power cables to the winch posts. In this case, either cable can be connected to either post. Route the Red/Black cables back to the contactor.
  12. Identify the cable that is connected to the Blue colored terminal on the winch motor and connect that wire to the Blue post on the contactor. Connect the other wire to the Yellow Post of the contactor.
  13. Identify the cable that will connect to the positive post of the battery and FIRST connect the other end to the contactor's Red terminal. Connect the other wire to the Black terminal of the contactor.
  14. Attach the cable to the positive post of the battery and then attach the other cable to the negative post of the battery.
  15. Mount the switch in a desirable location and connect the wires to the contactor making sure to match each color together. Connect the Red wire from the switch to a keyed power source and test that the switch operates correctly. If the switch runs the winch in the opposite direction, switch the wires at the contactor to reverse the directions.